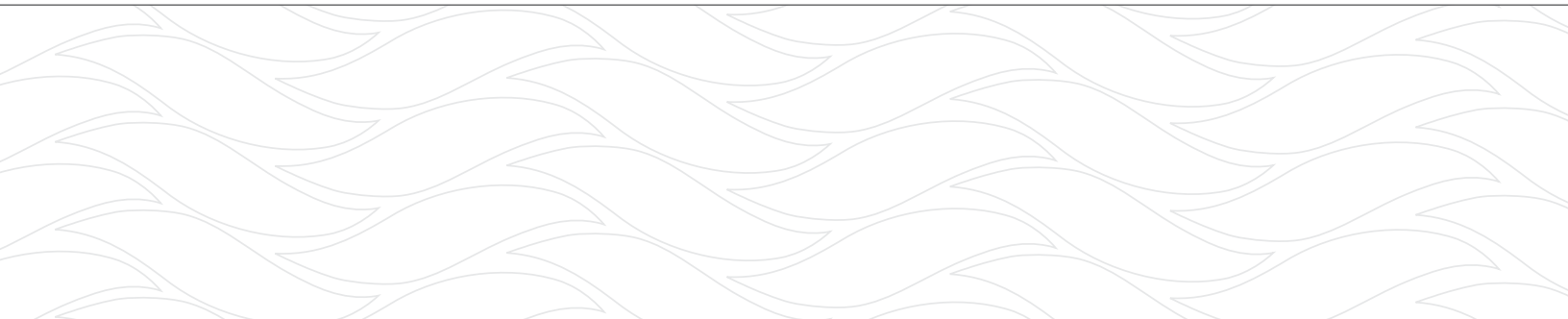
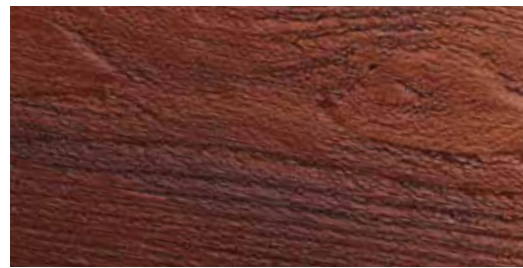
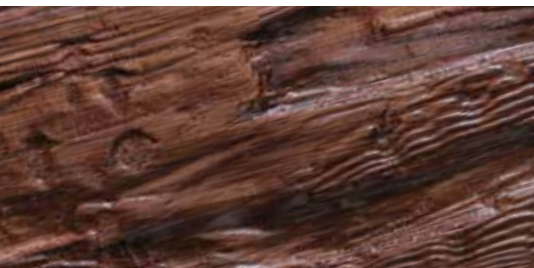




Woodgrain

Staining Instructions



REQUIRED ITEMS & MATERIALS:

- Pair of Gloves
- 3 Brushes for Stain
- Brush for Topcoat*
- Staining Rag
- Cleaning Rags
- Bottle of Mineral Spirits
- Stain
- Topcoat*
- Stir Sticks

*Topcoat is required for products that will be used in an exterior application.

RECOMMENDATION:

Fypon recommends General Finishes Water Based Stain[^] or Minwax[®] Gel Stain. If using Minwax Gel Stain, it should be cut 2–1 with 2 parts stain and 1 part mineral spirits. Follow gel stain drying times found on the container.

[^]If product will be used in an exterior application, General Finishes 450 Exterior Water Based Stain should be used with 450 Exterior Top Coat. If product will be used in an interior application, General Finishes Water Based Interior Stain should be used.

READ CAREFULLY BEFORE STAINING

To avoid inhaling any fumes when using stains, paints or topcoats, it is extremely important to use adequate ventilation. Keep all materials out of the reach of children. Close all containers after use.

Please be sure to follow the stain manufacturer's safety procedures.

Before You Start

DO:

- Apply stain when temperatures are between 50 to 90 degrees Fahrenheit and relative humidity is below 80%. These are optimal conditions for staining.
- Apply stain to all exposed edges and ends of your stainable polyurethane product. **IMPORTANT: Any Fypon product that will be exposed to weather must be finished within 90 days of exposure.**

DO NOT:

- Apply stain or topcoat while dew is present.
- Apply stain in direct sunlight.
- Sand stainable polyurethane product.

STEP 3: BLEND

After product has been fully stained, take a clean, dry short bristle brush and begin dry brushing and blending the stain in the direction of the grain. Every few strokes, remove the excess stain onto a clean rag or shop towel. Continue this process until you have completed the entire product or area of the product and it appears as any stained wood product. Pay special attention to any deep grooves and corners. Do not let stain collect or pool in these areas. For lighter shades, remove more of the stain when dry brushing. For darker applications, repeat Steps 2 and 3. Make sure first application is dry before applying second coat of stain.

Tip: To reduce bristle loss during the blending process, periodically tug on the bristles with a rag or shop towel. This will help remove loose bristles so the strands do not fall off and stick to the product.

STEP 4: TEST FOR DRYNESS

To test for dryness, use a gloved hand to touch an area of the product that is hidden or near the edge. The stain is completely dry when nothing comes off on the glove. If it is not dry, test again every hour until dry.

STEP 5: APPLY TOPCOAT (FOR EXTERIOR APPLICATIONS)

Stir the topcoat well with a stir stick.

To apply the topcoat, wet the tips of the brush to apply a single, very thin layer of topcoat.

Apply topcoat in a smooth and even motion. Do not use excessive brush strokes, as this may cause the topcoat to bubble or loosen the stain. If you find an area that is too light or dark with stain, apply a small amount of mineral spirits and wipe. Then reapply the stain and dry brush and blend area. After it is dry, apply topcoat.

Tip: To reduce bristle loss during the topcoat process, periodically tug on the bristles with a rag or shop towel. This will help remove loose bristles so the strands do not fall off and stick to the product.

Tip: Apply the topcoat in the same order in which you applied the stain in Step 2.

STEP 6: INSTALL PRODUCT

Product must be completely dry prior to installation. Follow Fypon installation instructions for all products, which can be found at fypon.com.

LONG-TERM MAINTENANCE

- All exterior finishes are affected by exposure to sun, weathering, moisture and air pollutants. Typical durability of the topcoat is 3–5 years, but may be less, depending upon site-specific conditions. When the topcoat feels rough, it's time to reapply a new layer of topcoat.

DO NOT:

- Reuse topcoat more than 3 years old.
- Use topcoat that has been frozen.

TROUBLESHOOTING BEFORE STAINING

Light scratches or scuffs:

1. Prior to applying stain, lightly spray scratched area with a matching primer or smooth the area by buffing in the direction of the grain. A 3M[™] Scotch-Brite[™] pad is recommended for buffing.
2. Clean the repaired area and allow to dry before finishing.

Deep scratches:

1. Fill the scratch with a wood crayon or scratch pencil. Body filler may also be used. Lightly sand. Grain detail may have to be manually etched into these fillers.
2. Wipe off any excess filler with a cleaning rag dampened with mineral spirits.
3. Product must be dry and clean before reapplying stain and topcoat.



STEP 1: SURFACE PREPARATION

Prior to staining, be sure to clean and prepare surfaces. Use a clean rag dampened with mineral spirits to wipe the entire surface, removing all contaminants.

Tip: Compressed air can be used to blow dust off of deeply grooved products.

Refer to the troubleshooting section of these instructions to repair any scratches, if necessary.



STEP 2: APPLY STAIN

Stir the stain well with a stir stick. Improperly mixed stain will not dry correctly.

APPLY THE STAIN

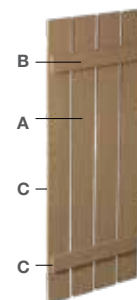
Using your brush, apply the stain directly on the surface of the polyurethane product. Ensure that you work the stain into the grain, fill all crack and crevices.

Beam Tip: If your beam is 10' or greater, stain the beam in sections. Apply stain to half the beam first, then dry brush removing stain to obtain the desired color. Go to Step 3 for dry brushing instructions.



Beams

- A. Start with one side
- B. Then top
- C. Then the other side



Shutters

- A. Stain main panels first
- B. Then battens
- C. Then edges

TROUBLESHOOTING AFTER STAINING

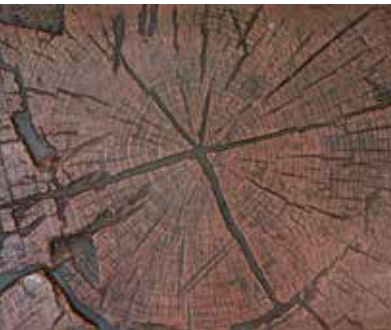
Fine scratches:

1. Wipe the surface with mineral spirits.
2. Apply the stain to the scratched area with a cotton swab or an artist brush.
3. Blend the stain until color match is achieved.
4. If clear topcoat is required, wait until the stain is dry before applying topcoat.
5. Apply a fine layer of topcoat over the repaired area with a clean cotton swab or small brush (approximately 1/2" width or less).

Tip: Fine scratches can be touched up by daubing stain onto the area even if topcoat has already been applied.

CREATE A UNIQUE LOOK WITH MULTILAYER STAINS

You can create an artistic look for your Beams and Beam Mantles by using two different color stains as shown below. It's recommended that you practice with two colors first to get the look desired. When you've determined the two colors you want to work with, apply the dark color stain first and dry brush (Step 3). After it is completely dry, apply the second stain color, lighter shade. Make sure the darker color is visible through the lighter shade of stain. Dry brush the second coat to get to the look desired.



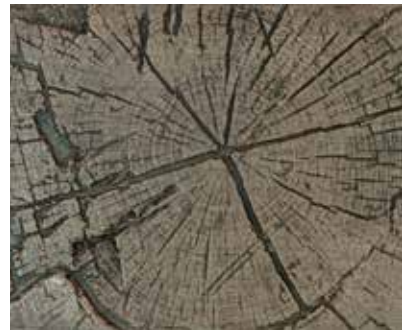
Antique Cherry / Brown Mahogany



Brown Mahogany / Black Cherry



Pecan / Brown Mahogany



Weathered Gray / Walnut



1750 Indian Wood Circle | Maumee, OH 43537 | Phone: 800.446.3040 U.S. and Canada
Fax: 800.446.9373 U.S. and Canada | fypon.com | info@fypon.com



Fypon warrants all of our products to be free from defects in material and workmanship for as long as the original owner of the residential dwelling owns the property. For complete homeowner lifetime limited warranty details, exclusions and limitations, please see your purchase location or visit fypon.com.